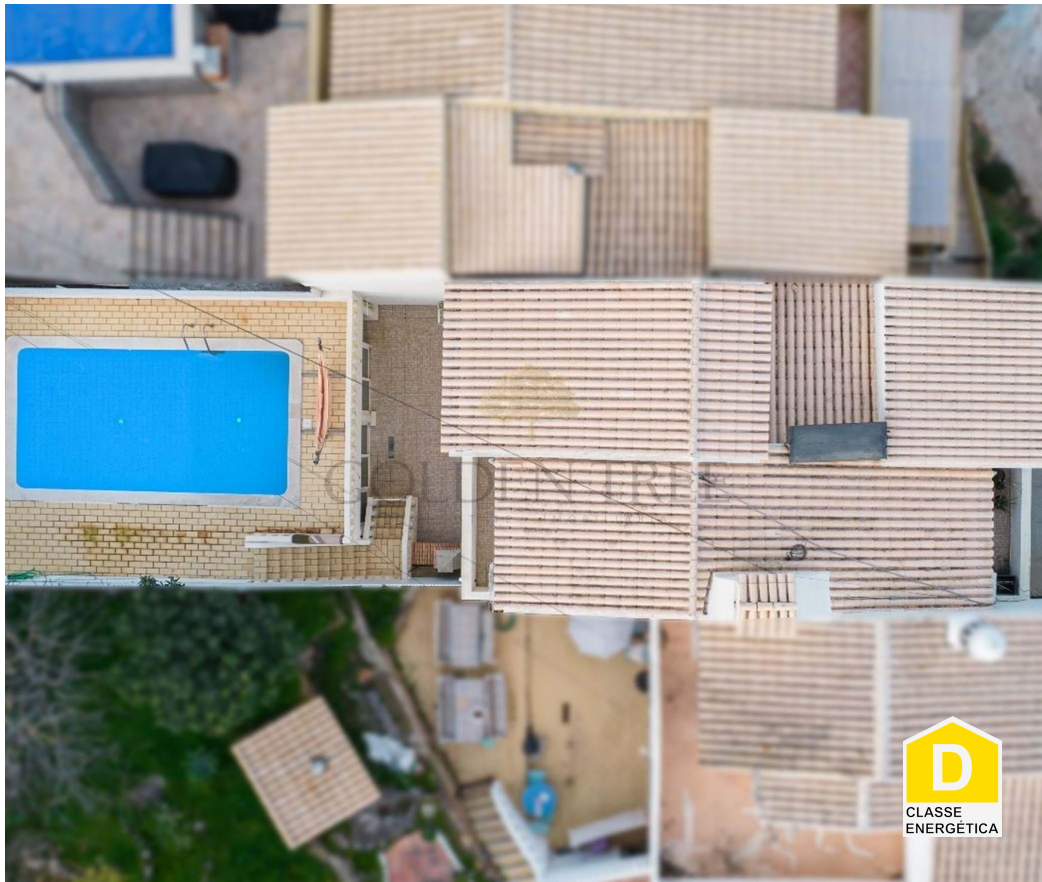




## Loulé (São Clemente) - Townhouse



 **3**  
 Bedrooms

 **3**  
 Bathrooms

 **141**  
 Area (m<sup>2</sup>)

 **201**  
 Land Area (m<sup>2</sup>)

 **Swimming Pool**



**475 000 €**  
 (EUR €)

### Three Bedroom Townhouse with Lovely Views in Loulé

Presenting a charming property nestled in the heart of the Algarve, where comfort meets elegance. This residence offers three spacious bedrooms, each featuring a private bathroom to maximize convenience and privacy. From every angle, breathtaking panoramic views stretch across the scenic Algarve valleys, creating a peaceful and inspiring setting perfect for relaxation. Step into your own private oasis outdoors, complete with a sparkling pool ideal for leisurely sun-soaked days or hosting gatherings with friends and family. While the property offers a serene escape, it's also conveniently close to essential amenities, blending tranquility with accessibility for the best of both worlds.

**T +351 962666860 <sup>2</sup> · E info@goldentree.net**  
**Av<sup>a</sup> Almirante Mendes Cabeçadas, Almancil, Portugal**  
**AMI 4204**

<sup>1</sup> (Call to national fixed network) | <sup>2</sup> (Call to national mobile network)



## Property Features

- Equipped kitchen
- Terrace
- Air conditioning
- Quiet Location
- Communal Garden
- Proximity: Beach, Golf course, Shopping, Restaurants, City, Pharmacy, Schools
- Energetic certification: D
- Storage / utility room
- Parking space
- Fireplace
- Pool
- Views: Countryside views, Pool view, Urbanization view
- Solar orientation: South

**T +351 962666860 <sup>2</sup> · E [info@goldentree.net](mailto:info@goldentree.net)**  
**Av<sup>a</sup> Almirante Mendes Cabeçadas, Almancil, Portugal**  
**AMI 4204**

<sup>1</sup> (Call to national fixed network) | <sup>2</sup> (Call to national mobile network)