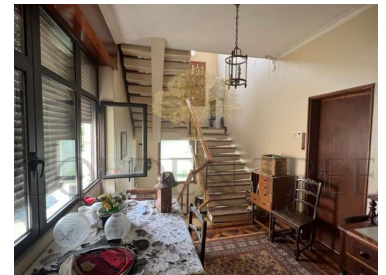




## Portimão - Villa



**6**  
Bedrooms

**4**  
Bathrooms

**444**  
Area (m<sup>2</sup>)

**553**  
Land Area (m<sup>2</sup>)

**Garage**

**770 000 €**  
(EUR €)

## Traditional Six Bedroom Villa in Portimão

The villa is located in the central area of Portimão, close to the Riverfront, Court House, Police, Library, and Emarp. The house consists of 4 floors and 19 rooms, a basement, ground floor, 1st and 2nd floor, and the last one a recessed floor. The basement has a garage that takes up practically the entire house floor. On the ground floor, you will find the entrance hall, kitchen, office, ensuite bedroom, guest bathroom, and a generously sized living and dining room with a fireplace. On the first floor, four bedrooms, one of them is ensuite with an office space and balconies, a bathroom, and a laundry room. On the 2nd floor, one more room, a terrace, and a solarium. Excellent investment opportunity. If you would like more information or visits, please feel free to contact us.



**Ana Paula Marques**

+351 962666860 <sup>2</sup> · 289392123 <sup>1</sup>

ana@goldentree.net

**T +351 962666860 <sup>2</sup> · E info@goldentree.net**  
**Av<sup>a</sup> Almirante Mendes Cabeçadas, Almancil, Portugal**  
**AMI 4204**

<sup>1</sup> (Call to national fixed network) | <sup>2</sup> (Call to national mobile network)



## Property Features

- Built year: 1958
- Equipped kitchen
- Walk-in wardrobe
- Balcony
- Garage
- Central location
- Mains water
- Views: City view, Garden view
- Solar orientation: South
- Floors: 4
- Storage / utility room
- Basement
- Terrace
- Fireplace
- Main drainage
- Garden
- Proximity: Beach, Shopping, Restaurants, City, Pharmacy, Public Transport, Schools, Playground
- Energetic certification: C



**Ana Paula Marques**

+351 962666860 <sup>2</sup> · 289392123 <sup>1</sup>

ana@goldentree.net

**T +351 962666860 <sup>2</sup> · E info@goldentree.net**  
**Av<sup>a</sup> Almirante Mendes Cabeçadas, Almancil, Portugal**  
**AMI 4204**

<sup>1</sup> (Call to national fixed network) | <sup>2</sup> (Call to national mobile network)