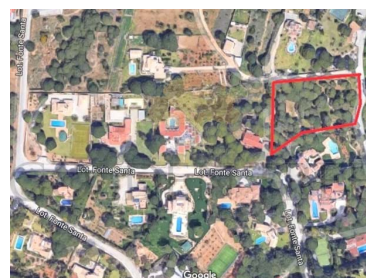
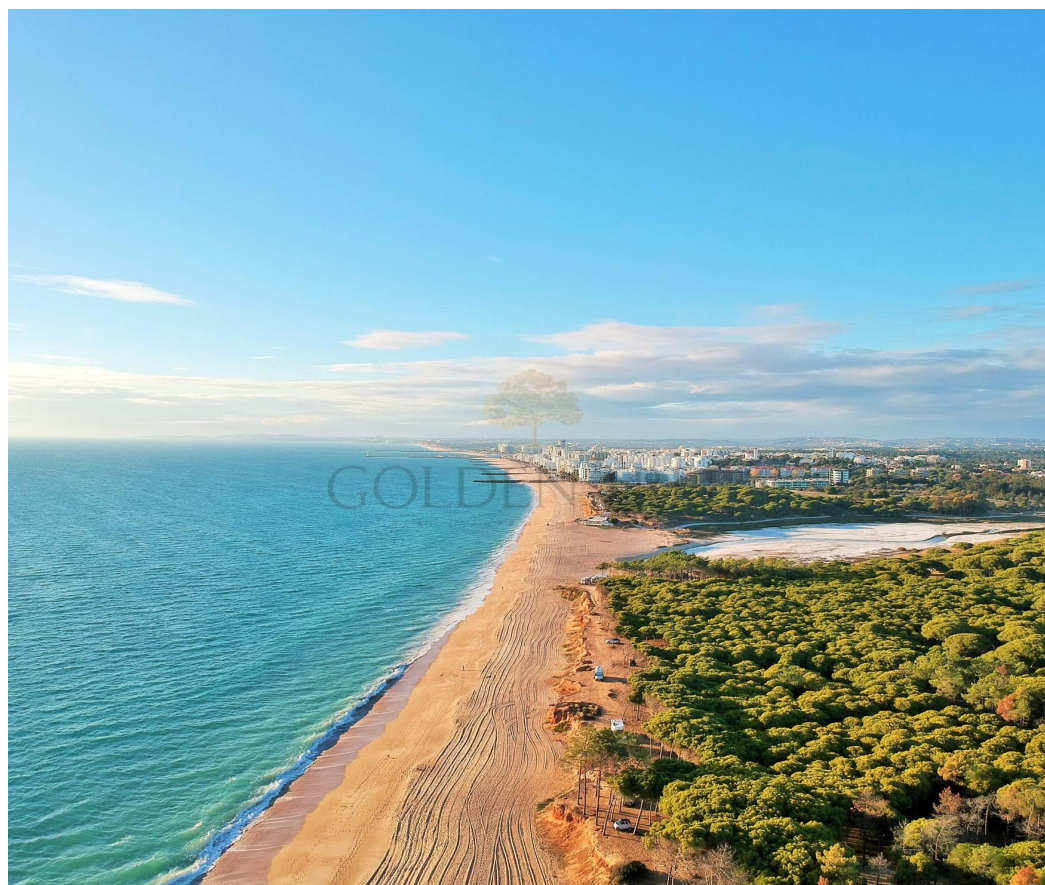




## Quarteira - Land



 **5050**

Land Area (m<sup>2</sup>)

**1 500 000 €**  
(EUR €)

## Large Plot Close to the Beach

Very large plot with the possibility to build a villa, located in Fonte Santa, within walking distance to the beach. Fonte Santa is a tranquil area located just minutes away from the beautiful resorts of Vale do Lobo and Vilamoura. If you are looking for privacy, yet minutes away from all amenities and 20 minutes from the airport then this is a fantastic investment opportunity.

**T +351 962666860 <sup>2</sup> · E [info@goldentree.net](mailto:info@goldentree.net)**  
**Av<sup>a</sup> Almirante Mendes Cabeçadas, Almancil, Portugal**  
**AMI 4204**

<sup>1</sup> (Call to national fixed network) | <sup>2</sup> (Call to national mobile network)



## Property Features

- Views: Urbanization view
- Solar orientation: South
- Proximity: Beach, Golf course, Shopping, Restaurants, City, Open field, Pharmacy

**T +351 962666860 <sup>2</sup> · E [info@goldentree.net](mailto:info@goldentree.net)**  
**Av<sup>a</sup> Almirante Mendes Cabeçadas, Almancil, Portugal**  
**AMI 4204**

<sup>1</sup> (Call to national fixed network) | <sup>2</sup> (Call to national mobile network)