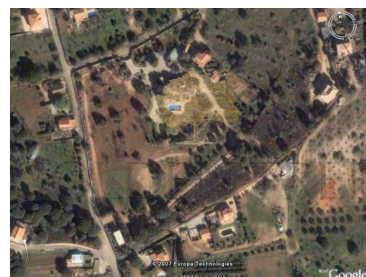




## Almancil - Villa



 **6** Bedrooms  
 **8** Bathrooms  
 **650** Area (m<sup>2</sup>)  
 **29910** Land Area (m<sup>2</sup>)  
 Swimming Pool

**2 500 000 €**  
(EUR €)

## Magnificent 6 Bedroom Estate in São Lourenço

Nestled in the picturesque village of São Lourenço near Almancil you will find this wonderful 7,4 acre estate which incorporates traditional design with high-quality contemporary technology. The thoughtfully designed floor plan encompasses approximately 650 m<sup>2</sup> of ample living space. This villa full of traditional and unique details is beautifully presented with many south facing rooms with garden views. The house leads onto a terrace surrounded by lush gardens, a pool, an orchard and a sizable portion of private land, making this property truly a unique opportunity. São Lourenço is best known for it's beautiful picturesque church and is located inbetween the town of Almancil and the historical city of Faro, close to all amenities and the airport.



**Ana Paula Marques**

+351 962666860 <sup>2</sup> · 289392123 <sup>1</sup>

ana@goldentree.net

**T +351 962666860 <sup>2</sup> · E info@goldentree.net**  
**Av<sup>a</sup> Almirante Mendes Cabeçadas, Almancil, Portugal**  
**AMI 4204**

<sup>1</sup> (Call to national fixed network) | <sup>2</sup> (Call to national mobile network)



## Property Features

- Heating
- Floors: 2
- Laundry
- Basement
- Terrace
- Air conditioning
- Fireplace
- Irrigation System
- Garden
- Proximity: Airport, Beach, Golf course, Shopping, Restaurants, City, Open field, Hospital, Pharmacy, Schools
- Built year: 1990
- Equipped kitchen
- Storage / utility room
- Balcony
- Drive way
- Barbecue
- Quiet Location
- Pool
- Views: Countryside views, Pool view, Garden view
- Solar orientation: South



**Ana Paula Marques**

+351 962666860 <sup>2</sup> · 289392123 <sup>1</sup>

ana@goldentree.net

**T +351 962666860 <sup>2</sup> · E info@goldentree.net**  
**Av<sup>a</sup> Almirante Mendes Cabeçadas, Almancil, Portugal**  
**AMI 4204**

<sup>1</sup> (Call to national fixed network) | <sup>2</sup> (Call to national mobile network)